



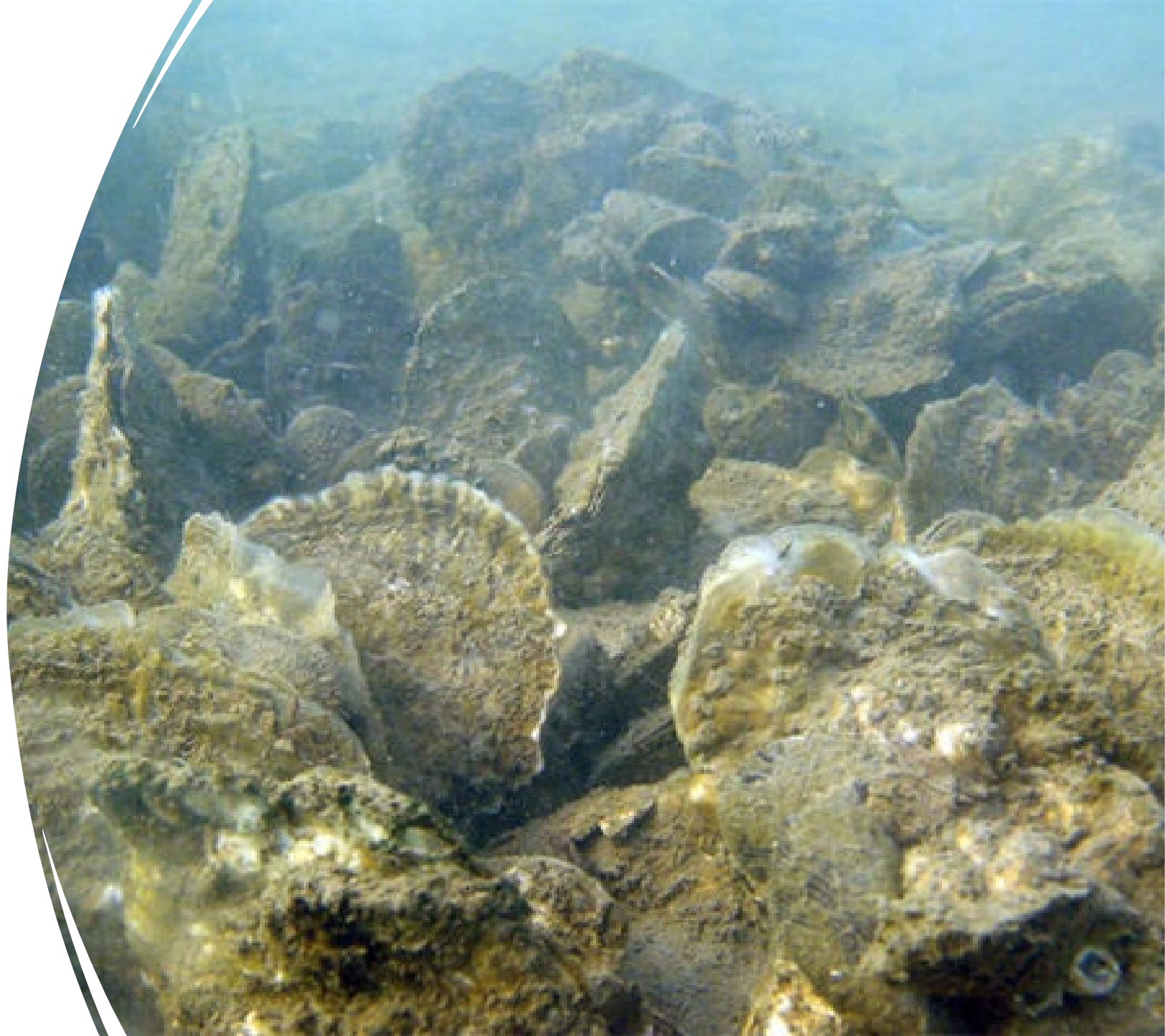
THE APALACHICOLA BAY SYSTEM INITIATIVE (ABSI)



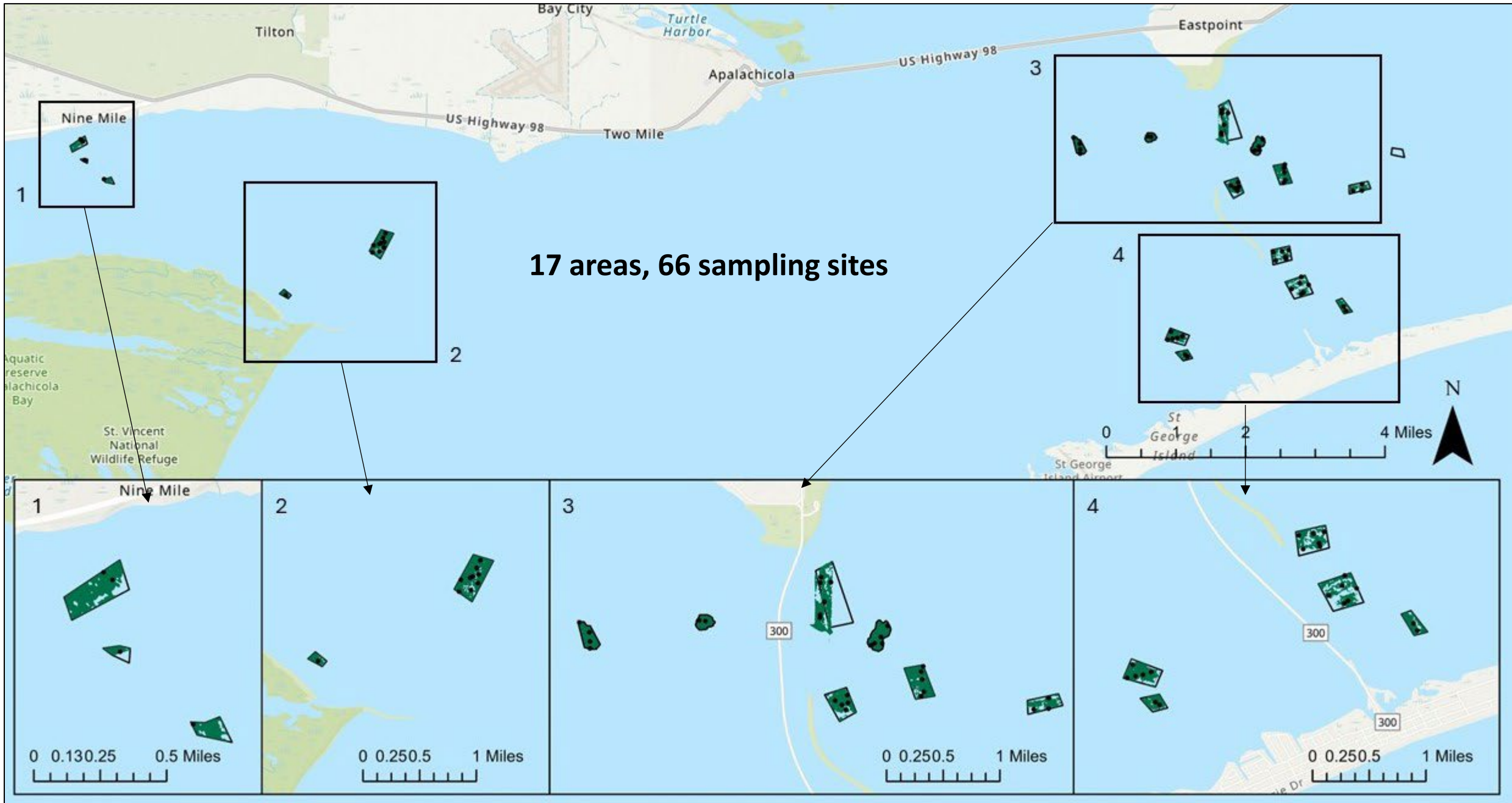
PARTNERSHIP FOR A RESILIENT APALACHICOLA
BAY COMMUNITY STAKEHOLDER MEETING
JULY 31ST, 2024

ABSI funding is provided by Triumph Gulf Coast Inc. and Florida State University

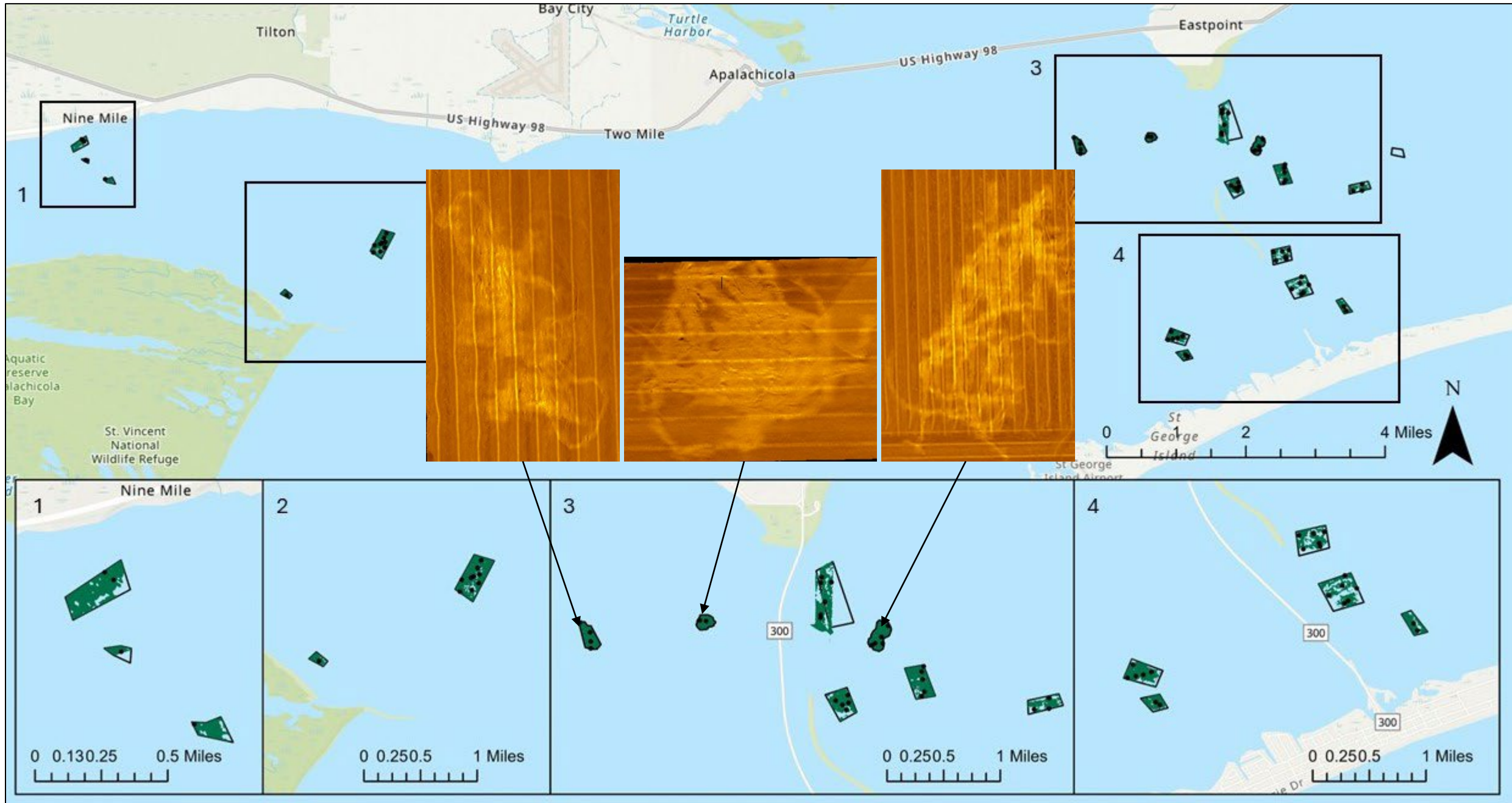
*How are the
oysters doing
in the Bay?*



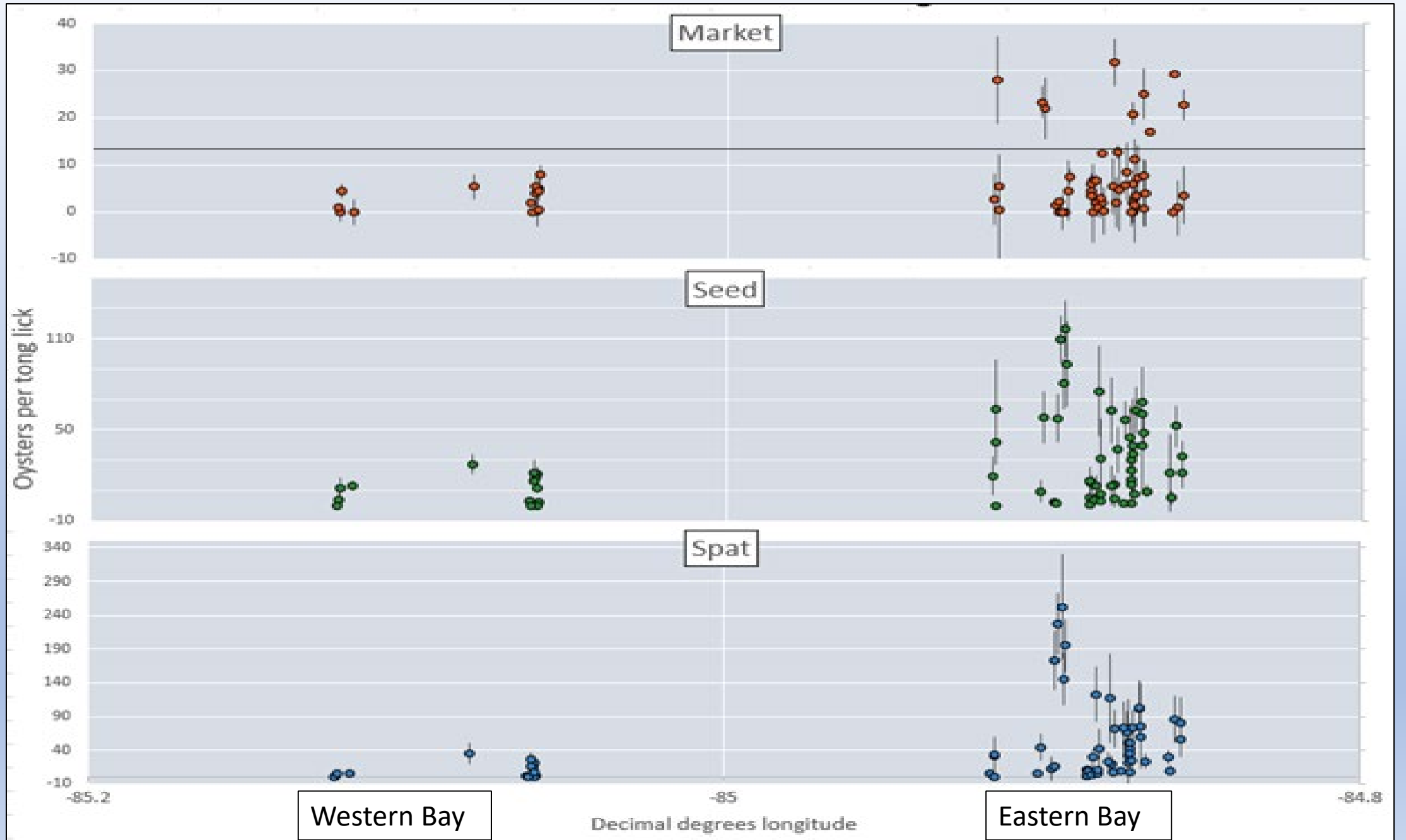
Spring 2024: ABSI Monitored Limerock-Planted Areas



Spring 2024: ABSI Monitored Limerock-Planted Areas

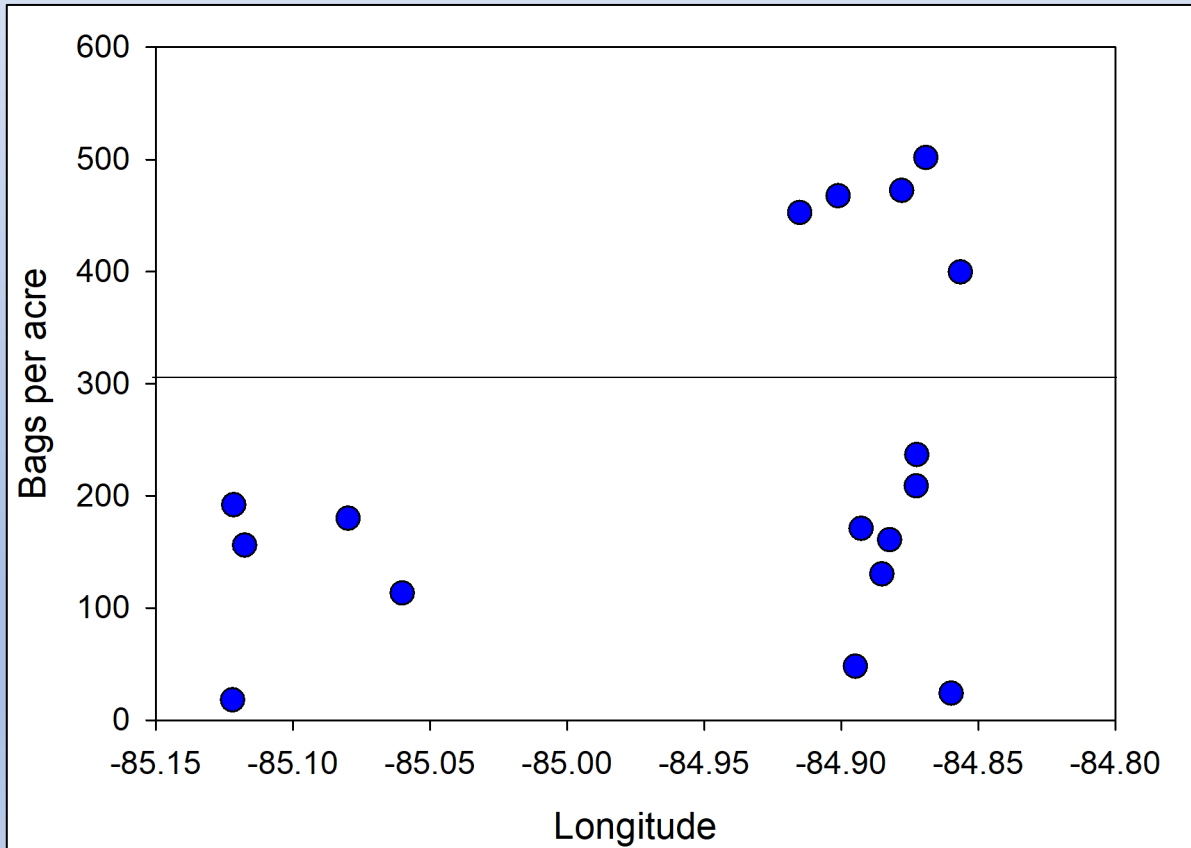


Spring 2024: ABSI Monitored Limerock-Planted Areas



Five sites have over 300 bags/acre

Bags of market oysters per acre at each sample site showing 300 bags/acre threshold for limited fishery



Hard-bottom, bags per acre and number of bags available for harvest at each site

REEF (WEST-EAST)	ACRES HARD-BOTTOM	AVERAGE BAGS/ACRE	HARVESTABLE BAGS/ACRE	TOTAL BAGS AVAILABLE
8M	12	18		0
9MK	1	192		0
9M	4	156		0
CT	5	180		0
NS	36	113		0
LHN	15	453	153	2,311
ELN	9	468	168	1,535
HB1	21	48		0
HB2	10	171		0
CP	38	130		0
ME	20	161		0
CPN	18	472	172	3,175
PR	25	209		0
SB	18	237		0
EH1	25	502	202	5,121
EH2	11	24		0
CPS	12	400	100	1,181
Total	280			13,324

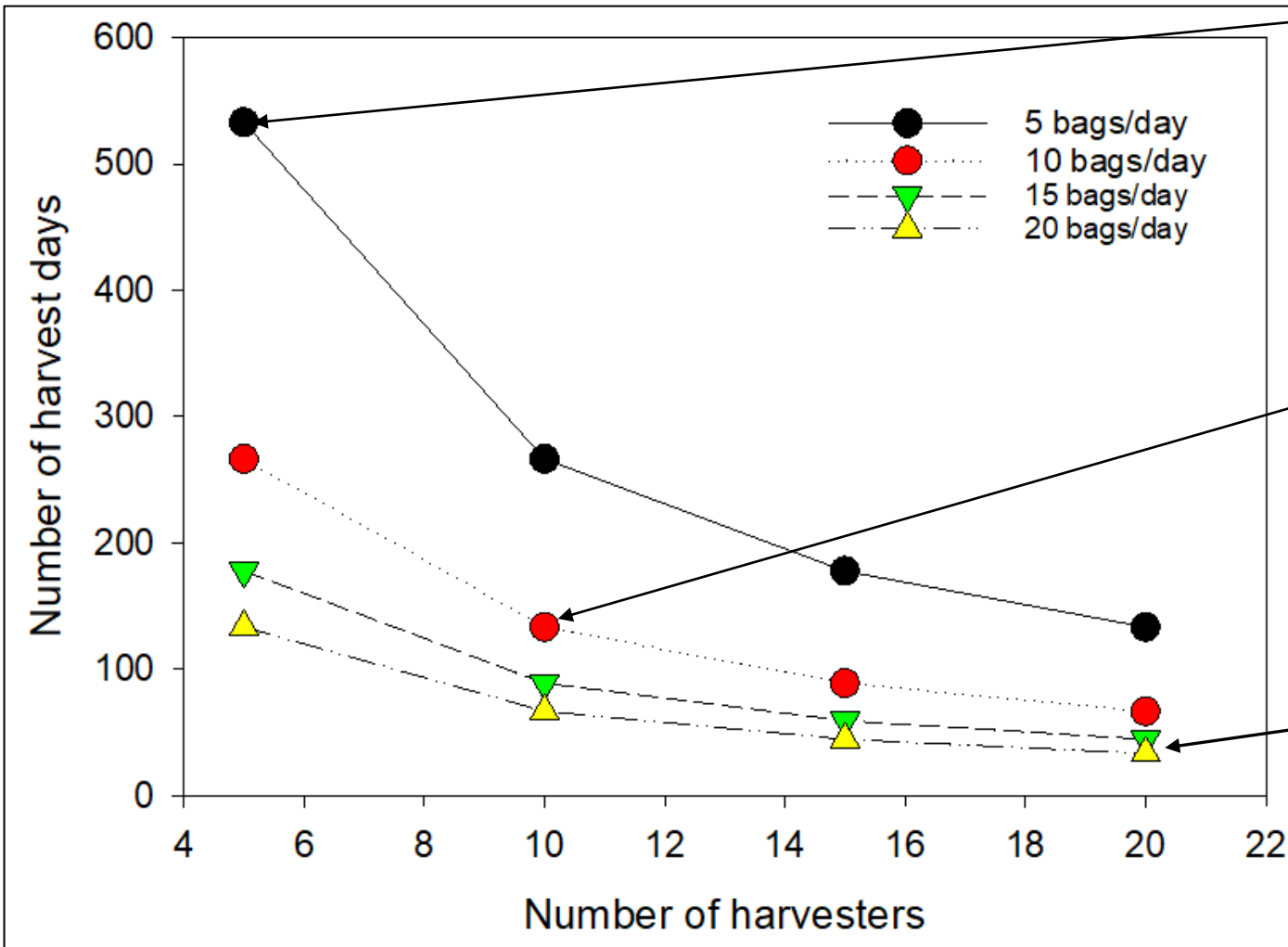
Total bags available for harvest = 13,324

5 harvesters @ 5 bags/day can each work for ~ 2 years*

10 harvesters @ 10 bags/day can each work for ~6 months*

20 harvesters @ 20 bags/day can each work for ~7 weeks*

* Assumes 5 day working week





ABSI Pilot Shell Recycling Project



ABSI Pilot Shell Recycling Project

In collaboration with Franklins Promise OysterCorps



O.Y.S.T.E.R.

Offer Your Shells to Enhance Restoration

Restaurants in the Apalachicola Bay area save the oyster top shells in 5-gallon buckets

OysterCorps staff collect shells and take them to a staging area

Once 'cured' they are used for shoreline protection in Franklin County

ABSI Pilot Shell Recycling Project

Recruit and retain local businesses to save shells

- Restaurants, seafood processors, oyster farmers

Place shell collection bins at local events and festivals

- Panacea, St Marks, Crawfordville and Sopchoppy

ABSI staff and volunteers will provide collection buckets collect shells as needed, then transport them to the FSU Marine Lab for curing

Cured shells will be **placed on oyster bars in Apalachicola Bay, with the help of local oyster fishers**



A scenic sunset over a body of water. The sky is filled with vibrant pink and purple clouds. In the foreground, there are silhouettes of trees and a small body of water reflecting the sunset. In the distance, there are silhouettes of buildings and a pier.

QUESTIONS?

FOR ADDITIONAL INFORMATION:

ABSI website: <https://marinelab.fsu.edu/absi/>

ABSI email: fsucml-absi@fsu.edu